

VOLVO

**PRAXEME: for a step by step implementation of the
Enterprise Architecture**

***How Political Aspect (scoping) and Semantic Aspect
give to the Business the means to transform its IS
keeping the focus on the “whole-of-enterprise”
Architecture***

Volvo Group 2010



Volvo 3P
Emeric Nectoux
2 16 Décembre 2010

VOLVO

Welcome to Volvo Group

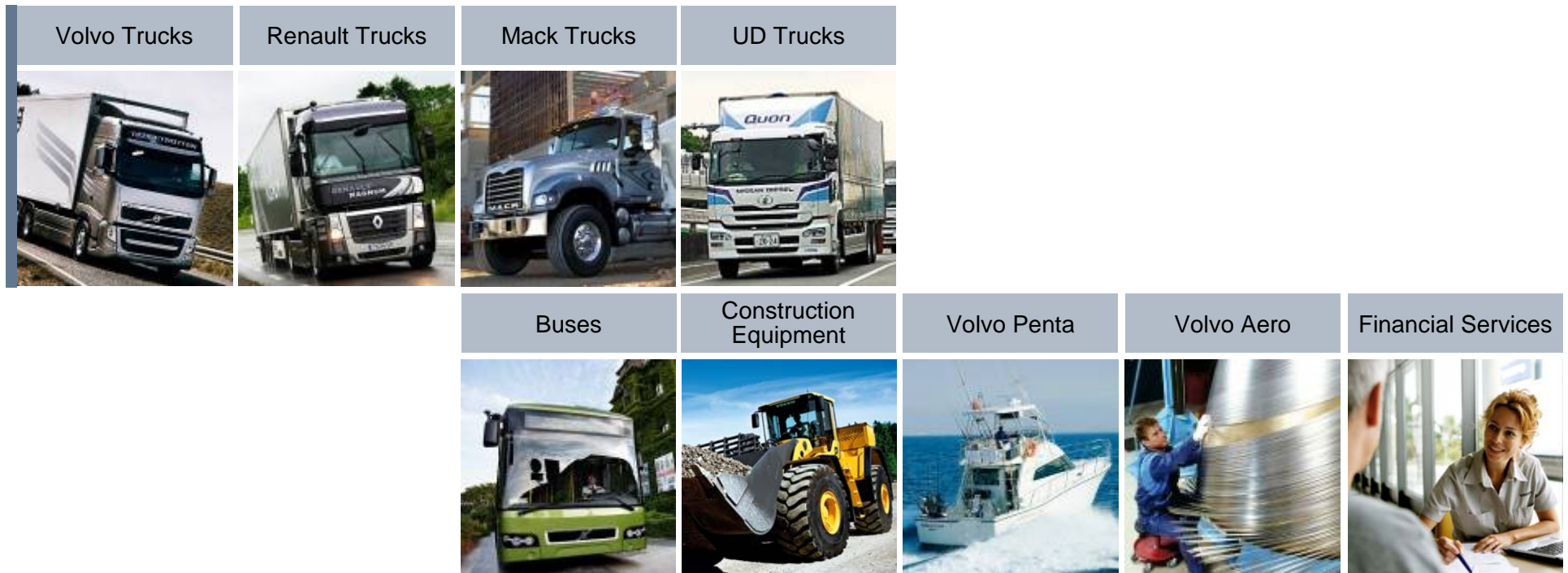
Volvo Group is one of the world's leading suppliers of transport solutions for commercial use.

We also provide complete solutions for financing and service.

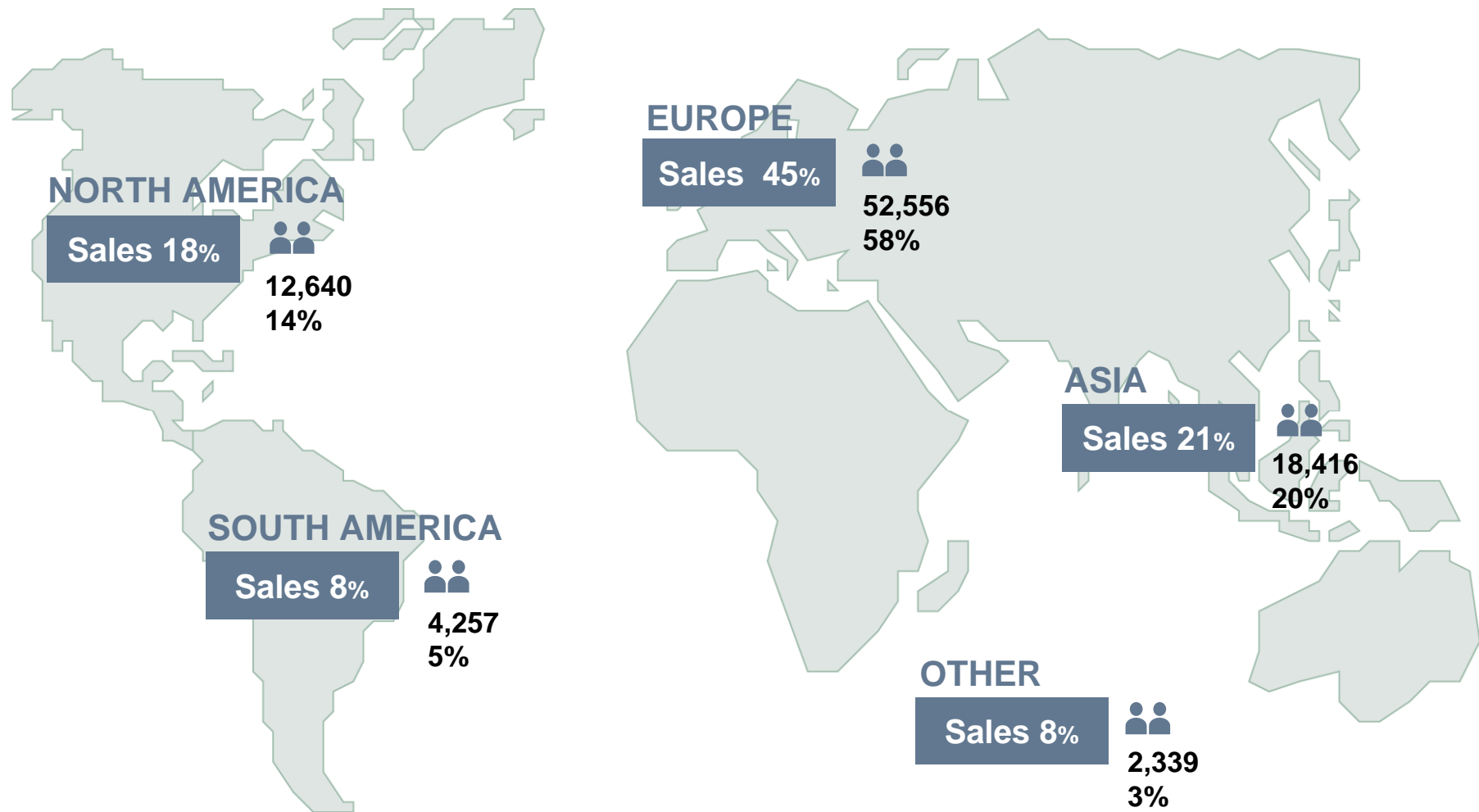


PRAXEME: for a step by step implementation of the EA

Business Areas

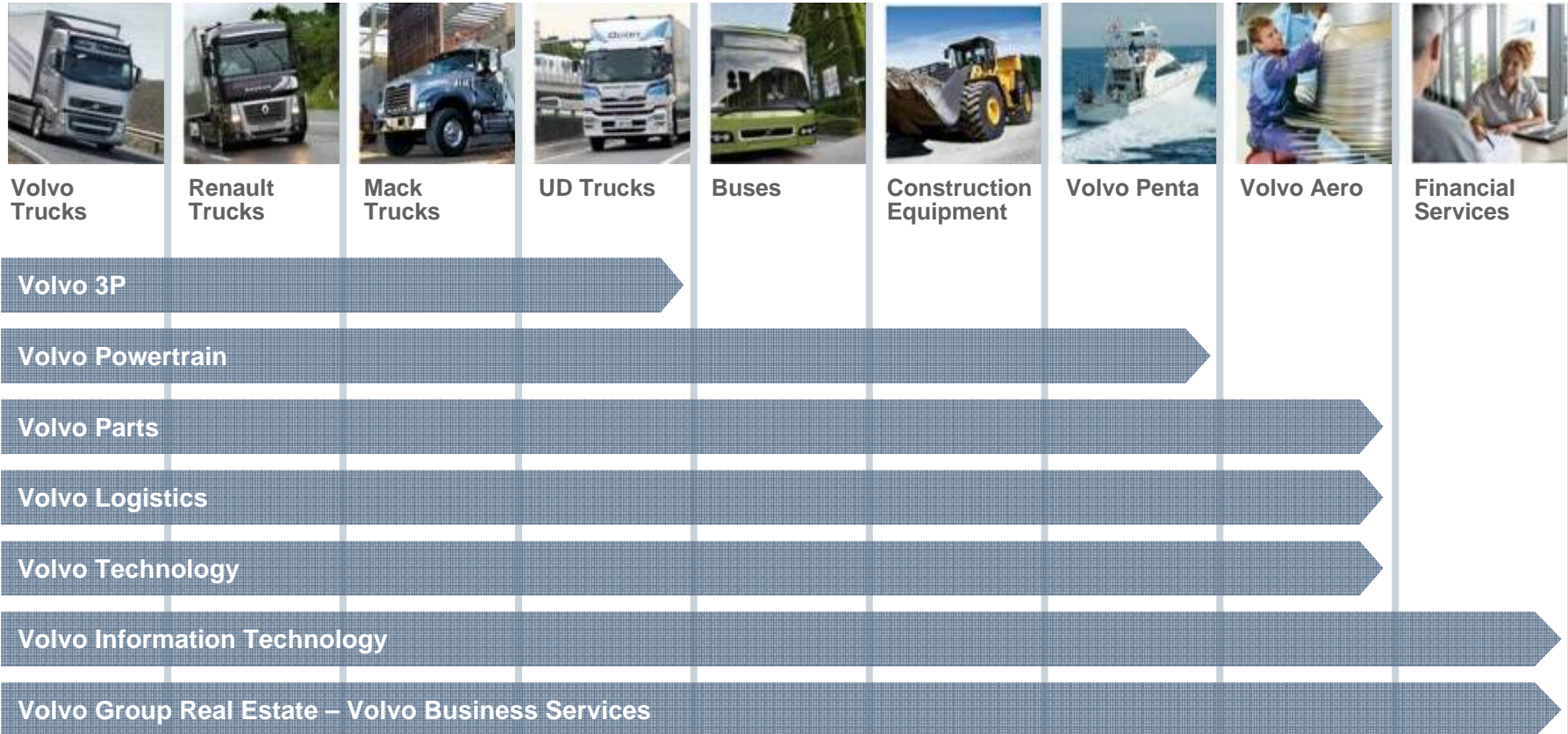


Sales and Employees Worldwide 2009



PRAXEME: for a step by step implementation of the EA

Volvo Group



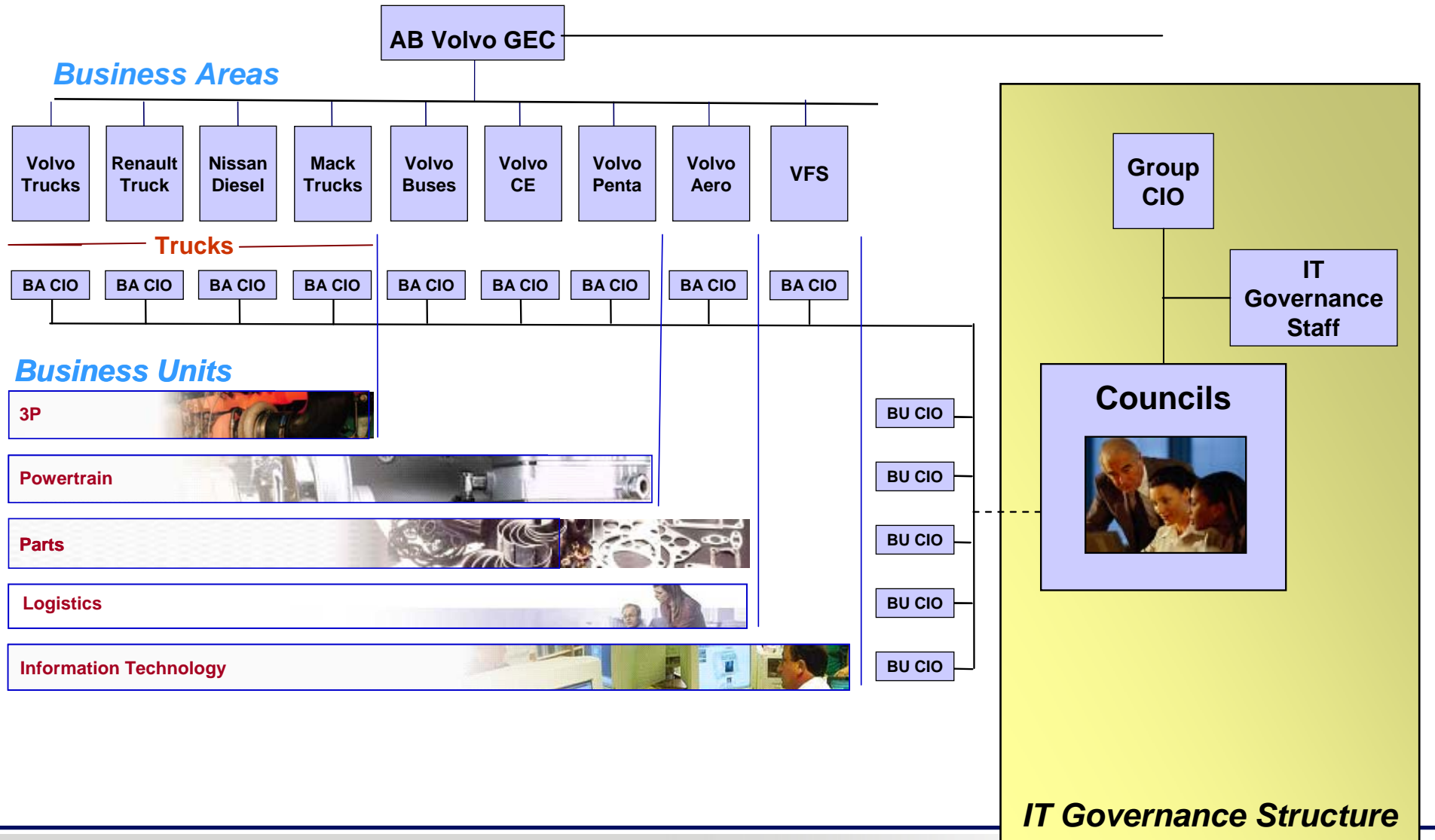
Volvo 3P

Emeric Nectoux

6 16 Décembre 2010

VOLVO

Who is the sponsor for EA initiatives?



Governance model: Governance / Demand / Supply

Management of IT within the Volvo Group

I

IT Management parties



- shared visions, values & plans
- openness, confidence & trust
- shared understanding of each parties role & responsibilities
- acting consistently within Volvos management processes
- common ways of working

- overall focus on Group efficiency and profitability

Overall Group IT effectiveness depends on effective collaboration between the parties

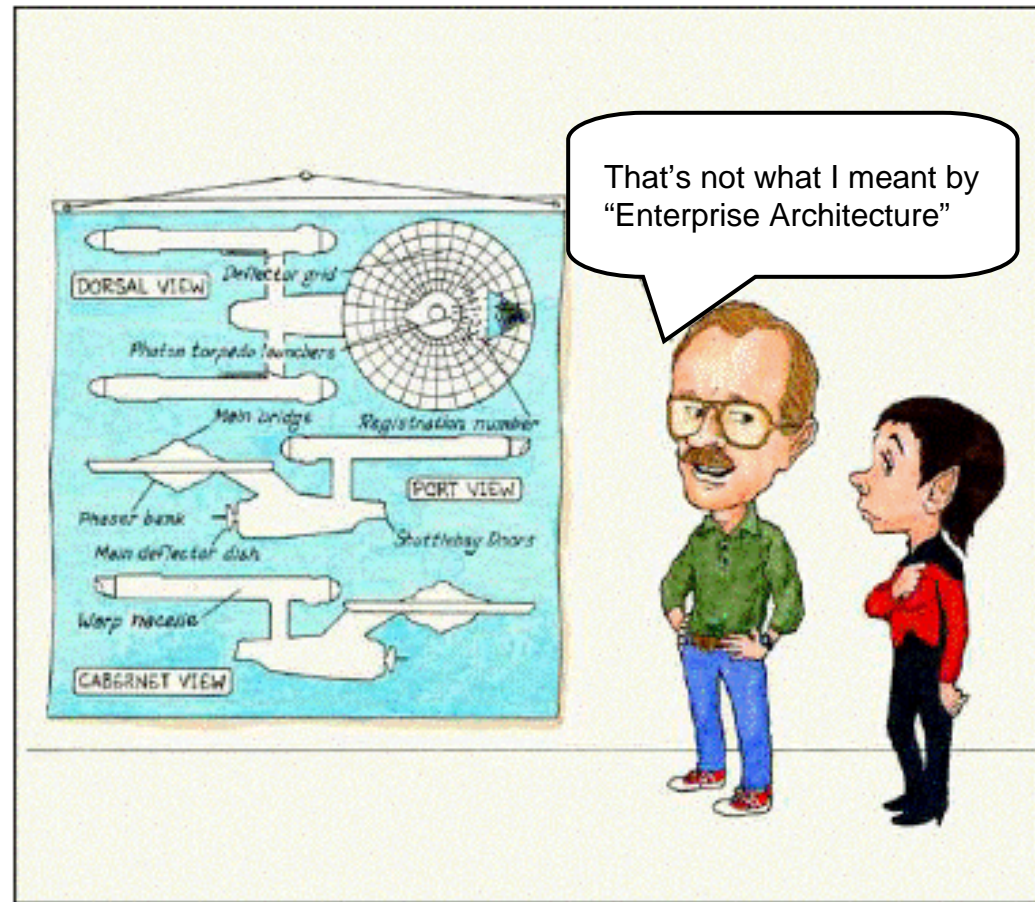
PRAXEME: for a step by step implementation of the EA

Main drivers for the 3P CIO Office. (extract)

- Secure reaching the Volvo group/3P **strategic objectives**
- Drive **synergies and harmonization** in the P's and between the P's.
- Manage the IS/IT **priorities and budget** on a 3P level
- Take a Volvo Group responsibility and drive **group harmonization** through the governance. Secure good and documented agreements between the BA/BUs (e.g. SLA's).
- Secure **core competences and key skill growth** with a deep involvement with the business and a efficient global footprint.
- Be the main interface, manage and develop the **partnership** with VIT.

PRAHEME: for a step by step implementation of the EA

Enterprise Architecture... What for?



Volvo AB Vision

- All companies within the Volvo Group use a common language, the same meta model¹ and modeling standards².
- All companies map business processes down to a relevant level where end-to-end processes, also across BA/BU, are visible.
- The end-to-end processes will be measured towards defined targets.
- Reach the targets of size, profitability and recognition based on a world class Process Management behavior.

1. **Volvo Group Meta Model:** formalized way of describing business model

2. **Volvo Group Modeling Standard:** Design rules

Volvo 3P Vision

Focus on Business needs

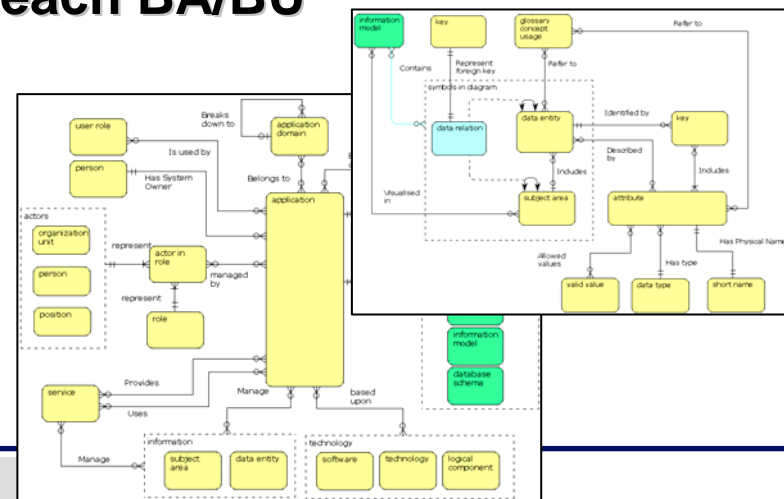
Structure information before structuring applications

- According to Zachman: “good information systems architecture is derived from the information system strategy”.

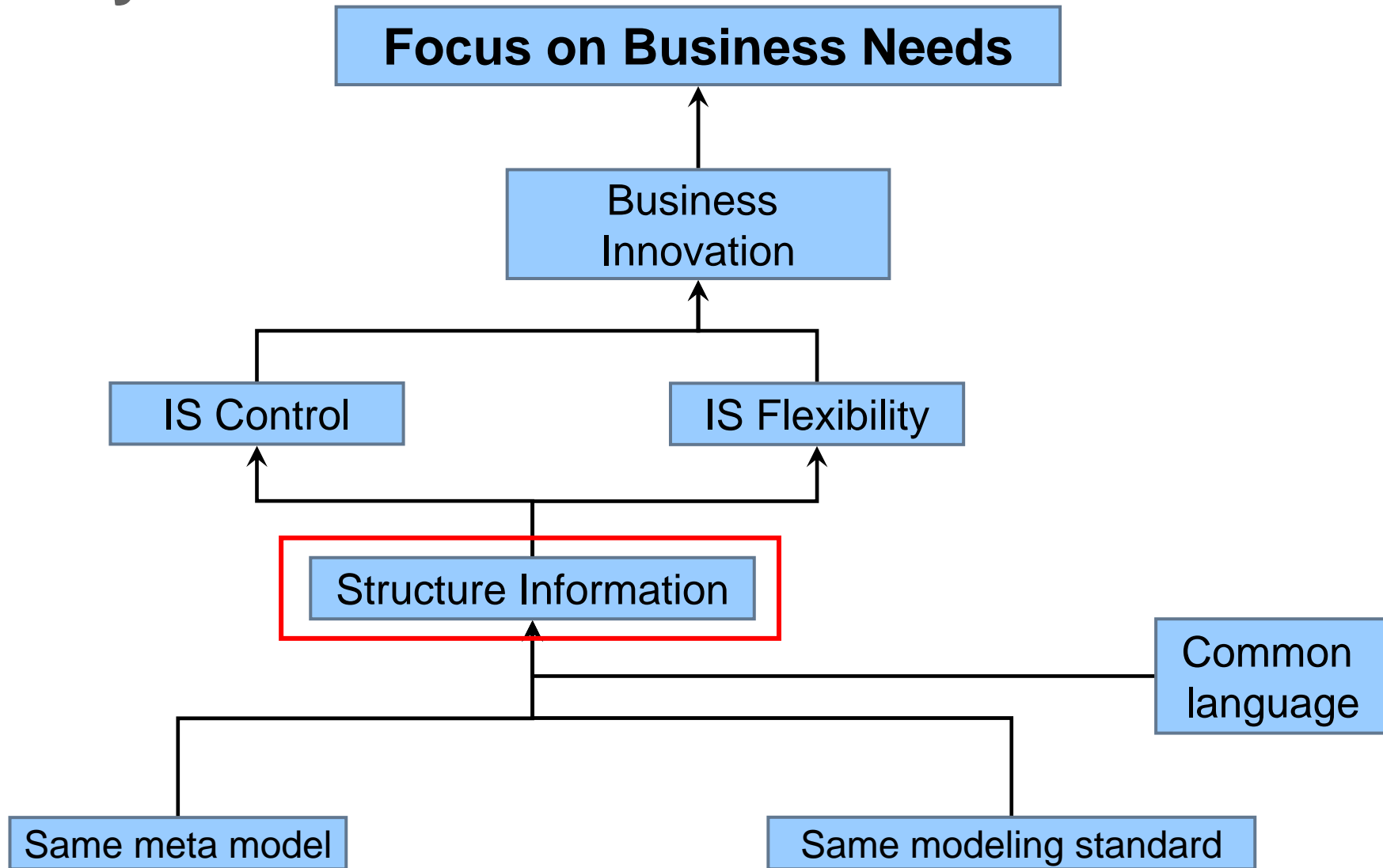
Use a common language shared with each BA/BU

- Use what already exists like VGMM⁽¹⁾ & VGMS⁽²⁾
 - Share the same meta model between all BA/BU
 - Use the same modeling standard

(1) VGMM: Volvo Group Meta Model
(2) VGMS: Volvo Group Modeling Standard

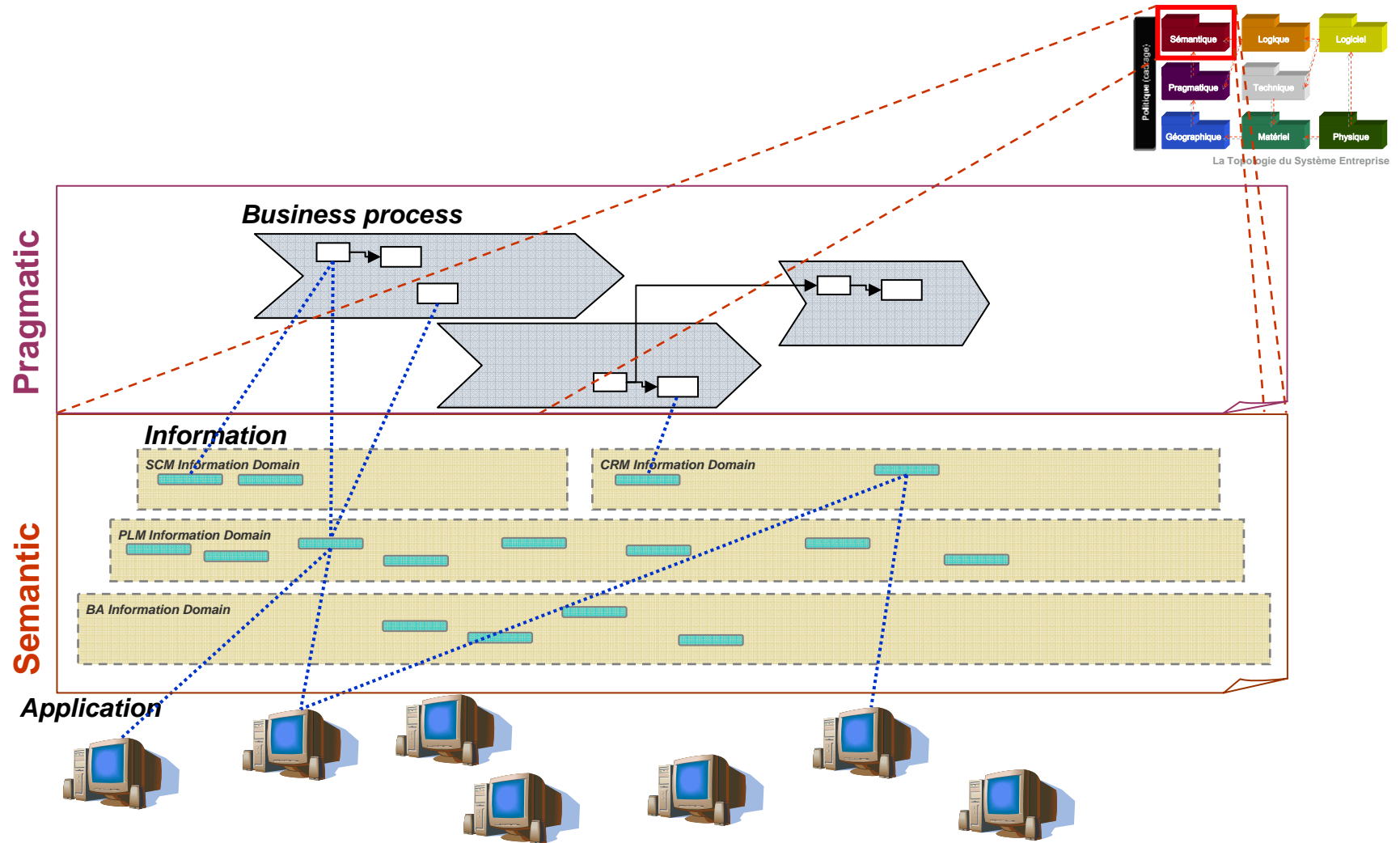


Why?



PRAXEME: for a step by step implementation of the EA

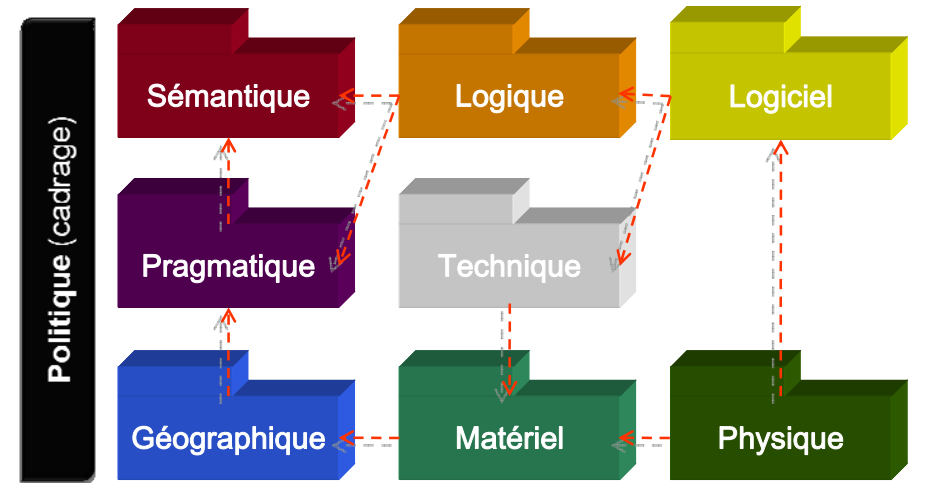
How?



PRAXEME: for a step by step implementation of the EA

Conclusion

What about PRAXEME?



La Topologie du Système Entreprise

➤ **Need a robust framework combined with a professional methodology and a good implementation process**

- **Political Aspect**
- **Semantic Aspect**
- **Pragmatic Aspect**
- **Logical Aspect**

PRAXEME: for a step by step implementation of the EA

Questions

